



April 2025
**Service
Changes**

March 11, 2025



SERVICE CHANGE PROCESS





PROPOSED CHANGES

Routes / Zones

- Route 201
- Route 112
- Route 490
- Zone 6

MetroLinkOK.org
For information on Express Routes and Park & Ride locations, see Route 900.

Route Listing	
110 MLK/ Hartford	320 Shendan
114 Charles Page/ Sand Springs	410 Lewis
117 Southwest Blvd./ Union	420 Harvard
130 Admiral	450 Yale
140 11th Street	470 Garnett
150 21st Street	490 West Tulsa/ 71st Street
201 Airport/Pine	500 Jenks Connector
250 Crosstown	700 AERO Peoria
300 31st Street	900 Union Express

Downtown Tulsa

Legend

- Route
- Denver Ave Station
- Sub-Hub
- Memorial Midtown Station
- West
- Southeast
- North Tulsa/ Turkey
- Broken Arrow

MicroLink Service Hours:
Zones 6-8
Mon-Sat: 6 AM to 6:30 PM
Zone BAT
Mon-Fri: 7 AM to 6 PM

Legend: Airports, Hospitals, University, College, Malls, Park & Ride. All routes are wheelchair accessible.

Note: See individual route maps for detailed routing information.

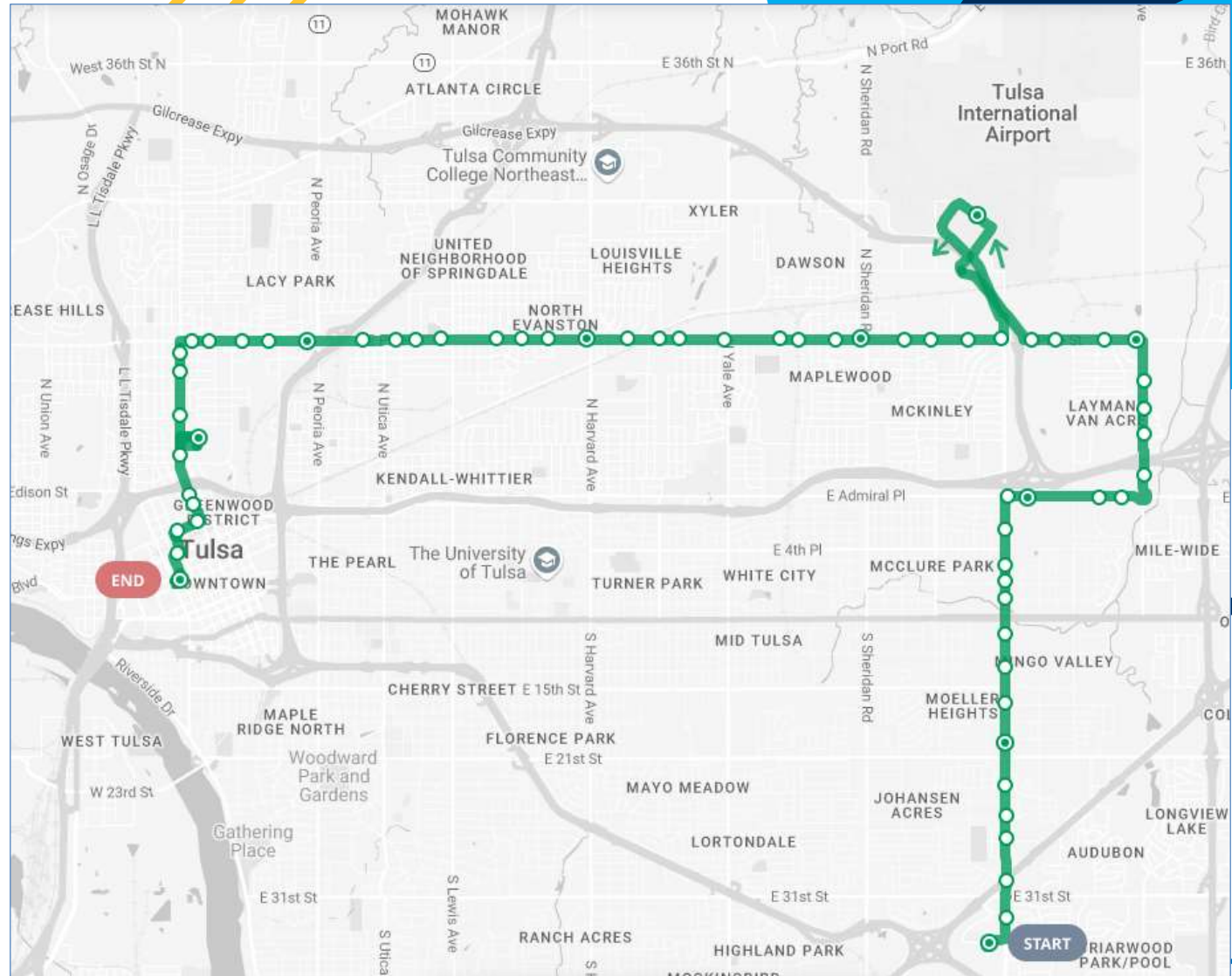


Route 201

Adding: Tulsa International Airport

Frequency: 45min headways (Week) & 65min (Saturday)

Travel: 35min trip from Airport to Downtown; 25min trip to MMS





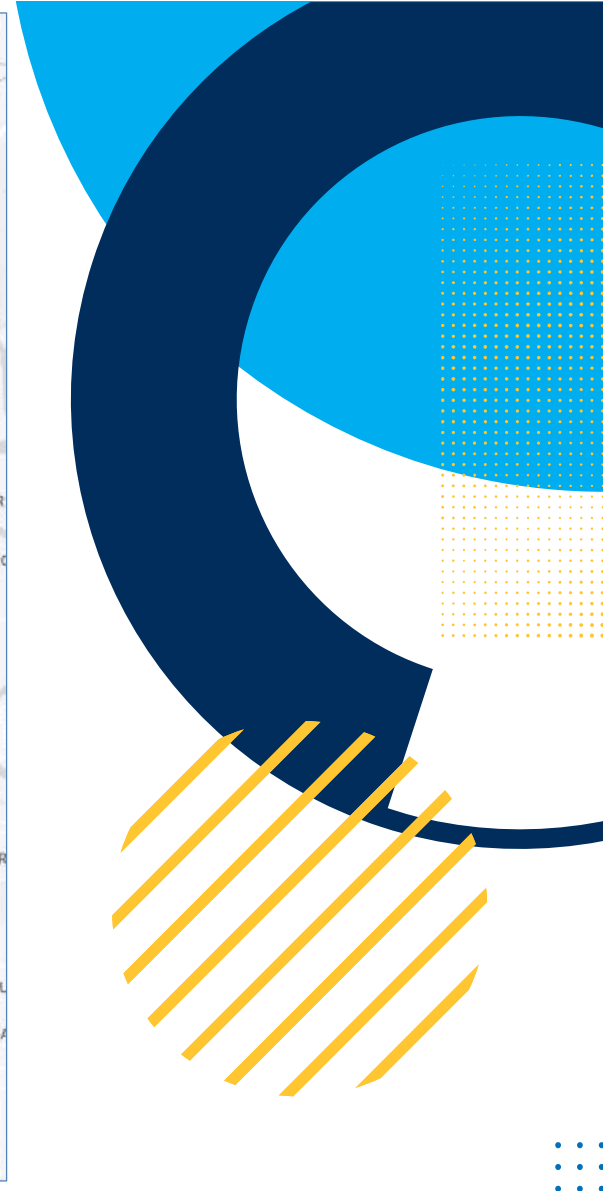
Route 112 (410)

Renamed: 410

Removing: Downtown Service / Denver Ave Station

Frequency: 55min headways (Week & Saturday)

Travel: 46min trip from 81st & Lewis to N. 41st & Columbia



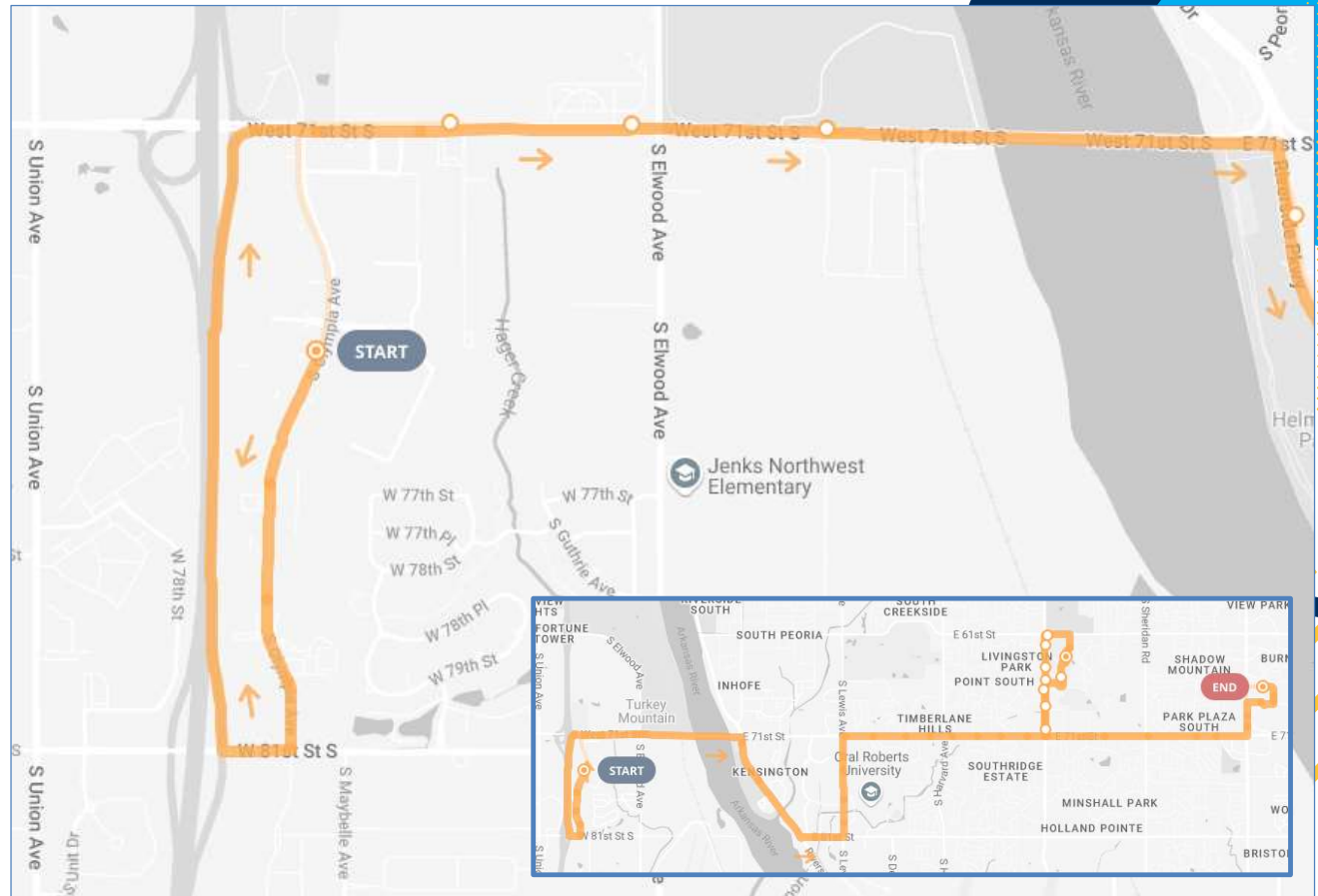


Route 490

Changing Direction: Now enters Tulsa Hills southbound on Olympia from 71st St. & exists northbound on Hwy 75

Frequency: 55min headways (Week & Saturday)

Travel: 47min trip from Tulsa Hills to Woodland Hills Mall





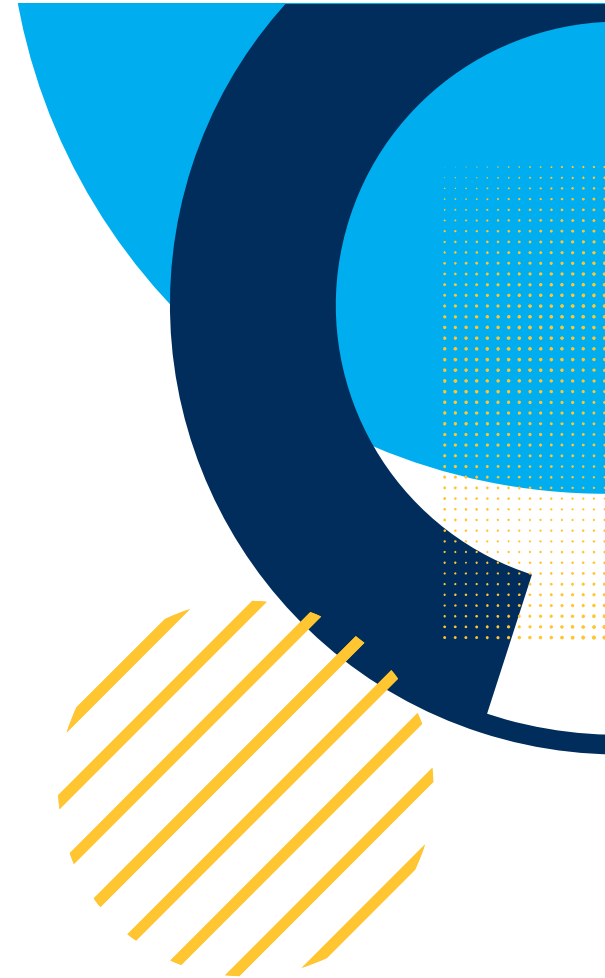
MicroLink Zone 6

Adding: Crystal City

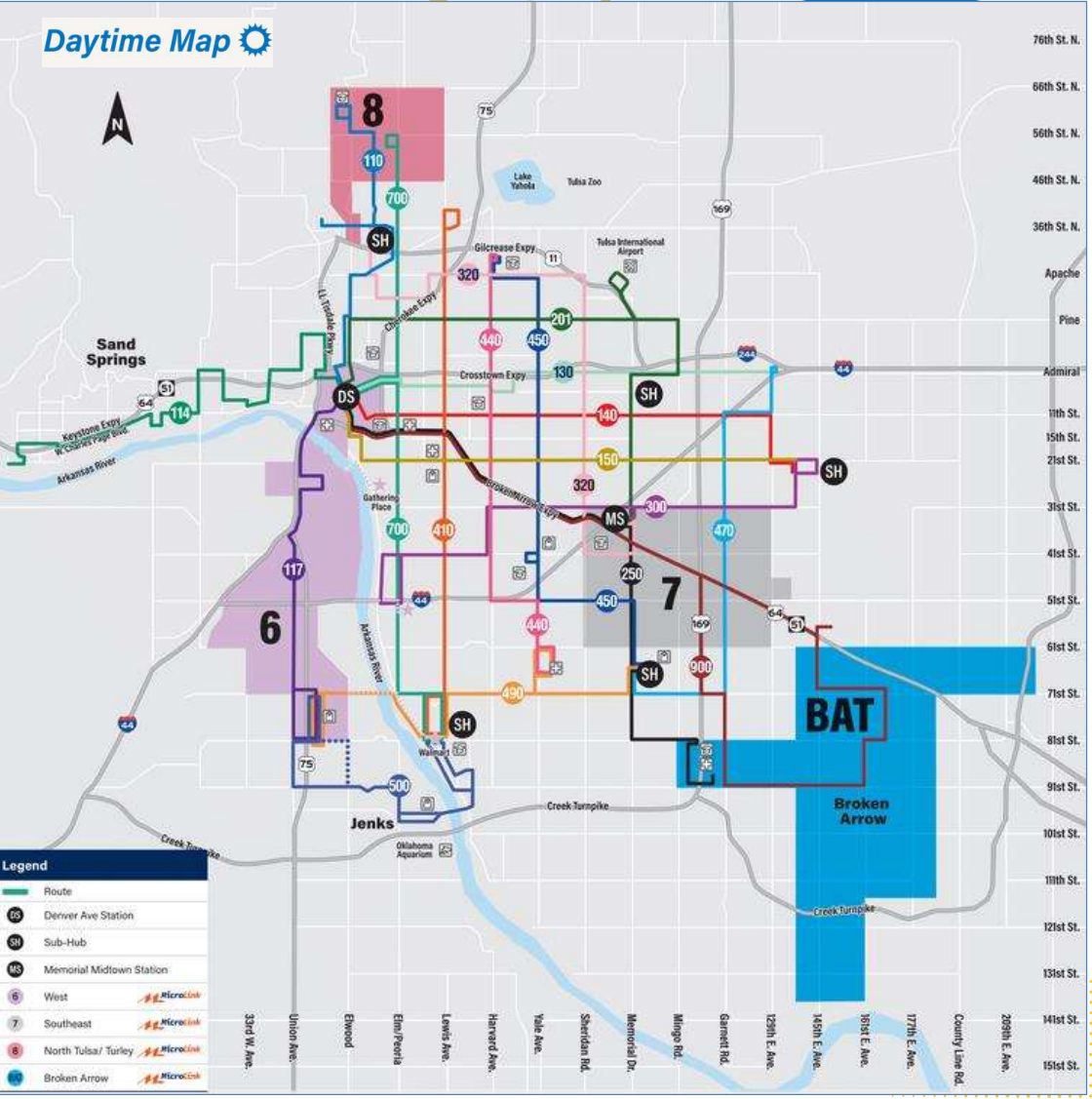
Hours:

Mon-Saturday: 6am – 6:30pm

Sunday: 7am – 6pm



Daytime Map



Nighttime & Sunday

